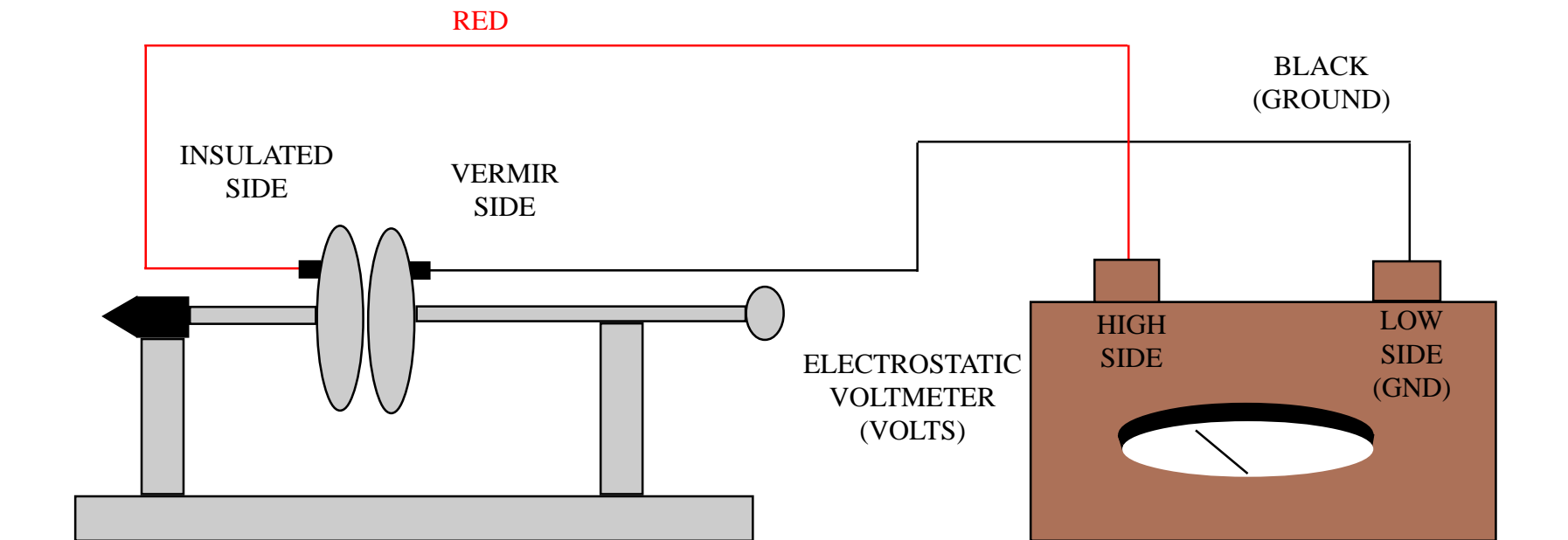


CAPACITOR PLATES
5C10.20



CHARGE WITH FUR AND PLASTIC ROD TO INSULATED SIDE. TRANSFER CHARGE FROM VDG

IF FUR AND ROD FAIL- SEE ALTERNATE WIRING DIAGRAM.

USE SCREWDRIVER TO DISCHARGE PLATES.

PROJECT VOLTMETER WITH VIDEO CAMERA FOR LARGE CLASSES.