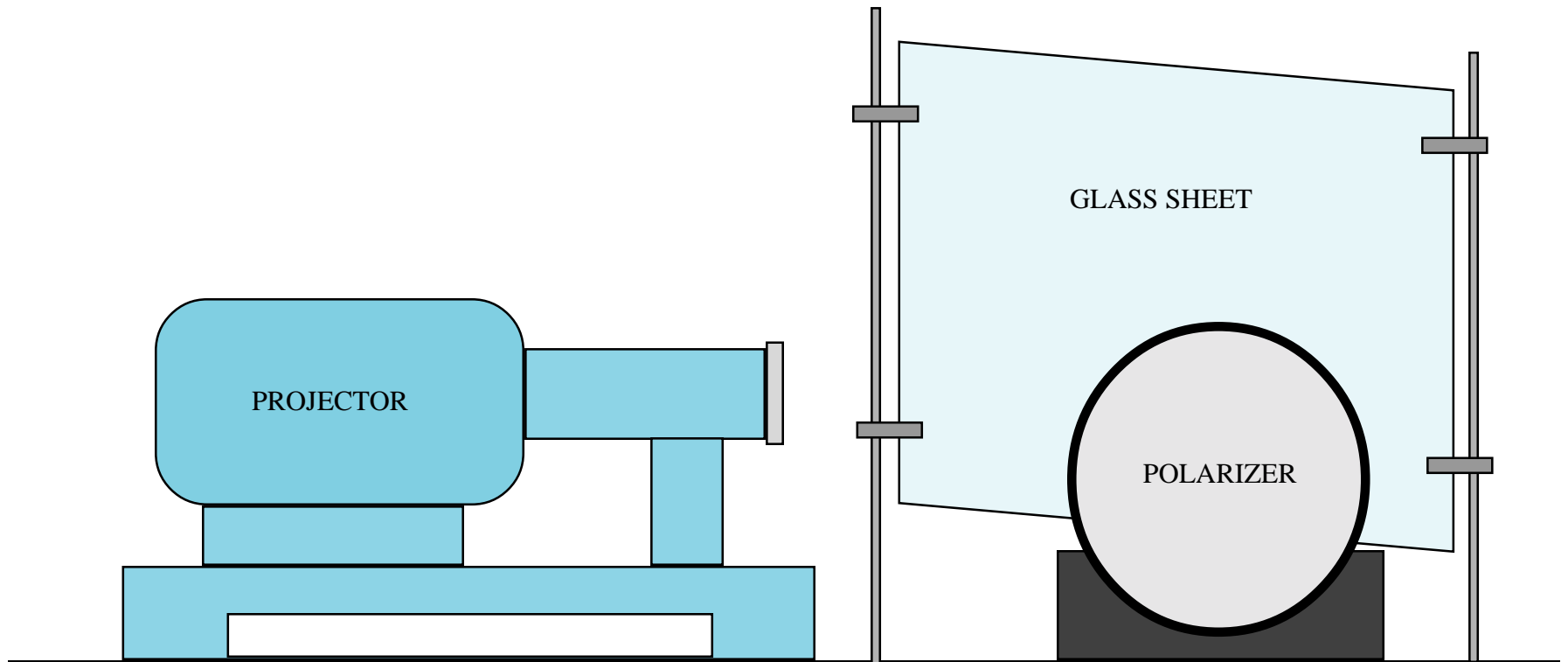


BREWSTER'S ANGLE
6H20.10



SET UP ON ONE CART. SECURE GLASS SHEET FIRMLY. USE ONLY ONE POLARIZER.

SHINE PROJECTOR ONTO GLASS SHEET. REFLECTED LIGHT THEN SHINES ONTO THE POLARIZER.

REFLECTED LIGHT IS COMPLETELY POLARIZED AT BREWSTER'S ANGLE.

PROJECTOR AND POLARIZER ARE PARALLEL. GLASS SHEET IS AT A 57° ANGLE TO THE PROJECTOR (APPROX.).